

Single Toggle CRUSHER

INTRODUCTION

RASA SINGLE TOGGL CRUSHERS cover applications both for primary and secondary crushing of materials. For primary crushing, crushers with the model codes from 107STC to 2415STC are used for light duty and those with 3018STC to 6048STC are used for medium or heavy duty. These primary crushers mount coarse-teethed jaw plates.

Secondary crushers with the model codes, from 309STC to 508STC mount fine-teethed jaw plates.

In addition to the above series, we can supply as secondary crushers RASA UF CRUSHERS of high performance featuring capability of size reduction to from 5 to 25 mm in large amount at low running cost. (please refer to RASA UF CRUSHER'S catalog.)

FEATURES

1. The machins of steel plate welding structure are study and light-weighted, but frame of smaller crushers, from 107STC to 2010STC, are made of steel casting.
2. The spherical roller bearings assure enough durability and safety against unusual loads.
3. Jaw plates are made of Had-Field or clad-steel casting and are capable of vertical reverse setting.
4. Discharge opening setting can be changed in a short time by means of an oil jack with the exception of smaller crushers, from 107STC to 2010STC.
5. The jaw plates are made of wear resisting clad-steel casting with 3 to 6 times longer life than manganese Had-Field.

APPLICATIONS

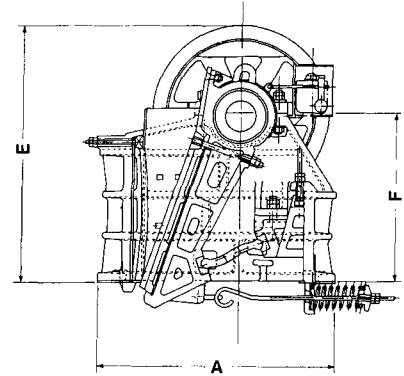
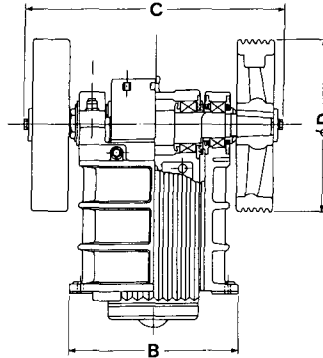
RASA SINGLE TOGGLE CRUSHERS are widely used in mining industries, Construction and civil engineering works, chemical industries and many other fields.

RASA (MADE IN JAPAN)

Model code	Feed opening mm	Motor power kW	Revolution rpm	V belt Type × pieces	Machine weight kg	Capacity by Settings				
						(upper) mm	(lower) t/h			
107STC	250×180	11	350	B×5	1,400	15	25	35	50	
						3	4.5	7.5	10.5	
1610STC	400×250	18.5	300	C×4	3,100	15	25	35	50	
						5.5	9	12	15	
2010STC	510×250	22	300	C×5	4,500	25	35	50	75	
						16.5	22.5	27	33	
2415STC	610×380	37	250	C×6	8,000	30	50	75		
						33	42	54		
3018STC	760×460	45	250	D×5	13,200	35	50	75	100	
						35	54	79.5	102	
3624STC	920×610	75	250	D×5	19,860	75	100	125	150	
						120	145	170	190	
4230STC	1,070×760	95	230	D×11	27,600	75	100	150	200	
						130	170	250	330	
4836STC	1,220×910	132	225	E×10	39,200	80	100	150	200	
						160	200	300	400	
5442STC	1,370×1,070	150	200	E×12	63,000	100	150	175	200	250
						280	380	440	480	590
6048STC	1,520×1,220	190	200	E×14	81,500	125	150	175	200	250
						390	420	490	540	640
309STC	760×230	30	300~350	C×6	5,900	15	25	35	50	
						15	21	27	33	
428STC	1,070×200	45	300~350	C×6	7,400	15	25	35	50	
						20	27	35	42	
508STC	1,270×200	55	300~350	D×6	9,900	15	25	35	50	
						28	38	48	57	

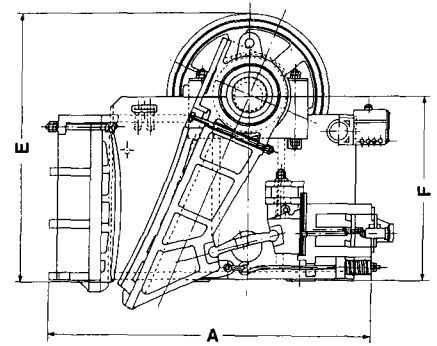
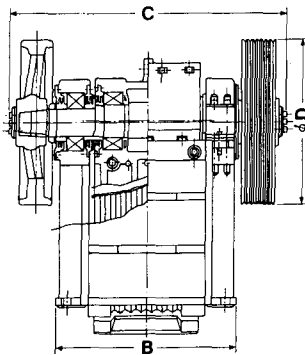
DIMENSIONS

Smaller crushers



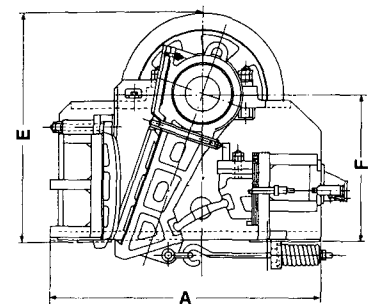
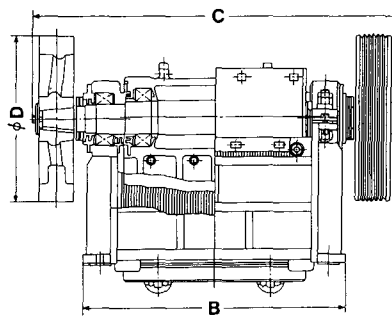
	A	B	C	φD	E	F
107STC	900	520	900	700	1,025	675
1610STC	1,170	780	1,263	825	1,298	880
2010STC	1,325	920	1,390	950	1,405	920

Primary crushers for medium or heavy duty



	A	B	C	φD	E	F
2415STC	1,725	1,065	1,632	1,170	1,980	1,395
3018STC	2,200	1,300	1,876	1,200	2,215	1,605
3624STC	2,790	1,550	2,380	1,400	2,300	1,630
4230STC	2,890	1,870	2,225	1,600	2,805	2,005
4836STC	3,360	2,030	2,500	1,800	3,215	2,315
5442STC	4,220	2,300	3,327	2,000	3,645	2,645
6048STC	4,490	2,440	3,650	2,050	4,045	3,035

Secondary crushers



	A	B	C	φD	E	F
309STC	1,395	1,155	1,830	900	1,350	900
428STC	1,600	1,520	2,114	950	1,315	840
508STC	1,760	1,750	2,385	1,000	1,390	890